

# A new choice for equipping high-end homes with low-sound DC inverters



High energy efficiency



19 dB Low sound



Reliable quality

Clivet's next-generation full DC inverter duct type air conditioner full DC inverter brings high-efficiency and energy-saving constant temperature and comfort. The DC inverter rare earth compressor not only rapidly conducts refrigeration and heating, but also lowers the running sound to 19 dB(A). The concealed installation fits a variety of decoration styles for high-end homes, enhancing the home's internal and external refinement and increasing prestige.

\*Note: The above data was provided by our company's nationally recognized laboratory.

## 01 Innovative DC inverter technology to revolutionize the quality of home life

Clivet's technology has always innovated in pursuit of high efficiency and stability, and the high-quality DC inverter rare earth compressors have taken another big step in terms of innovation. It features a compact structural design and runs more smoothly. The use of permanent magnetic rotors that do not require an external supply current greatly improves power utilization, reduces losses, and is more energy-efficient.

### DC inverter

#### Four advantages of the high-quality DC inverter rare earth compressor



#### Novel R410A environmentally-friendly refrigerant

Novel R410A environmentally-friendly refrigerant is used. With an operating pressure 1.6 times that of an ordinary R22 air-conditioning unit, it has higher evaporating pressure, higher condensing pressure, and lower condensing temperature, reducing power consumption and reducing environmental damage to the ozone layer. This is an internationally recognized environmentally-friendly refrigerant.

\*Note: The above data was provided by our company's nationally recognized laboratory.



Precise core components of the compressor



**Silent mode**  
Perform refrigeration and heating less whispering



**Power**  
Mature inverter technology brings power surge



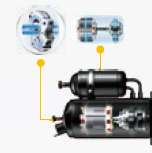
**Energy saving**  
Soft start greatly improves power utilization



**Durable**  
The vitality of a sports sedan

## 02 High-quality core components are used to ensure better quality

The high-quality DC inverter compressor, the DC motor, the precision refrigerant control and other core components are integrated, which not only ensures the quality of the system, but also saves energy and electricity, and is comfortable, noiseless, and durable.



#### High quality brand compressor

It features a powerful, high-quality brand high-efficiency DC inverter compressor, which has the advantages of energy saving and low noise during operation.



#### High efficiency DC motor

The high efficiency DC motor can effectively reduce energy loss and enhance the operating efficiency, thus significantly increasing the service life.



#### Efficient heat exchangers

With a cross-type multi-flow path design, it features a more uniform refrigerant distribution, more substantial heat exchange, and higher efficiency.



#### Silent fan blade

The fan blade with a CFD optimized structural design reduces motor energy consumption and operating noise.

## 03

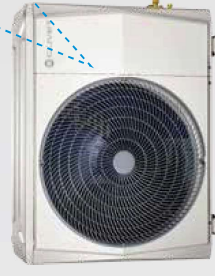
### High energy efficiency, provides an energy-saving, worry-free design

The high-efficiency, energy-saving compressors, motors, and heat exchangers use high-performance, high-quality core components to further increase energy efficiency levels, giving the duct type air conditioner a higher energy efficiency than the industry standard, and is efficient and energy-saving, beginning a new lifestyle of low carbon emissions and environmental protection.



## 04

### The inverter module is cooled by means of refrigerant to cope with a greater variety of environments



- This reduces the heat generated by inverter modules and components, improves the high temperature refrigeration operation frequency of the compressor, and improves the high temperature refrigeration capacity. It can perform strong refrigeration in a high temperature environment of **55°C\*** and improve the high temperature refrigerating capacity by **15-20%\***.

- The inverter module utilizes **refrigerant heat dissipation** technology to better cope with various harsh high temperature environments than ordinary air conditioners, so that the electric control box is not impacted by high temperatures, maintains a cool state, and is more reliable.

- It performs refrigeration rapidly in a high temperature environment, and improves the indoor temperature drop speed by **5-10%\*** compared with an ordinary air conditioner.

\*Note: The above data was provided by our company's nationally recognized laboratory.

## 05

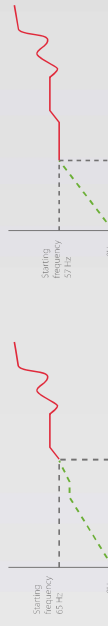
### Full DC inverter operation allows it to rapidly reach a comfortable temperature

Clivet is never too slow for a comfortable experience. The DC inverter technology features a high-frequency start-up function. After power-on and startup meet the set conditions, it will run at an instantaneous running frequency of 65 or 57 Hz. After rapidly reaching a set temperature, it switches to low-frequency operation to stably maintain comfort and achieve rapid cooling and heating, so that users do not need to wait to enjoy a comfortable temperature.

#### Cooling and heating time comparison diagram



Schematic diagram of the high frequency start-up function



58635 model, save 107s

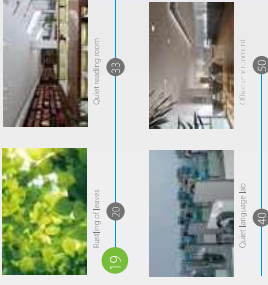
58671 model, save 49s

## With a low volume of 19 dB\*, it is quieter and calms the mind

CFD air duct optimization and analysis techniques; aerial impeller simulation technique; stable and quiet.

- After years of research on the fan duct and system, the DC motor of the integrated indoor unit achieves 7-fan speed regulation.
- Low noise EXV design, chassis simulation noise reduction technology, and superheat degree control technology.
- The application of technologies such as full-process noise comfort control.
- It achieves a low sound of 19 dB to provide users with greater comfort.

\*Note: The above data was provided by our company's nationally recognized laboratory.

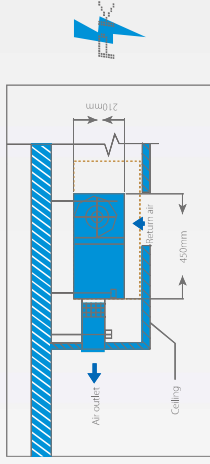


## Exquisite concealed installation shows refinement and leaves a small visual footprint



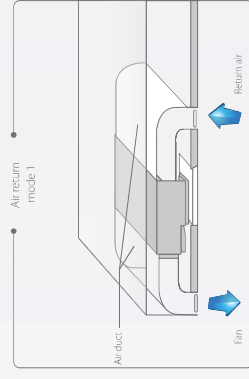
With embedded installation, the indoor unit is completely hidden in the ceiling, exposing only the air outlet and the air return port, making it appear more reserved and delicate than conventional air conditioners.

### Thin duct type air conditioner



**Compact body, saving more installation space**

The body of this thin duct type air conditioner has a thickness of only 210mm, and a depth of only 420mm, which can save more living space and does not protrude from the wall, conserving ceiling space.



**Return air design, flexible layout**

Multiple air duct types can be achieved through simple adjustment, providing a greater degree of freedom in the installation process.

## The 7-fan speed function is comfortable and pleasant

Clivet's full DC inverter duct type air conditioner features a new full DC indoor unit, which further reduces the unit's operating noise. The 7-fan speed function is extraordinary, providing healthy living that's powered by technology. Indoor airflow is adjusted with precision, creating a comfortable and pleasant atmosphere.

### Strong air wins through strength

#### Strong airflow relieves stress

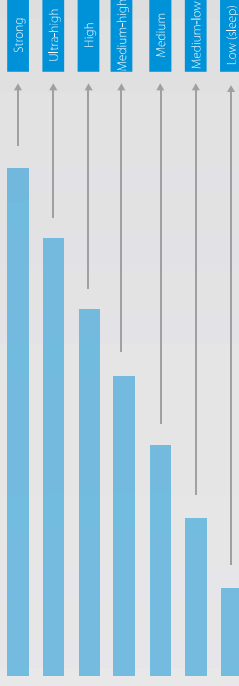
When you are tired from work, you will have a comfortable temperature at home. Rapid cooling or heating provides a more graceful temperature experience.

### Sleep airflow creates a sense of leisure

#### Let go of complexity to enjoy the tranquility of youth

19 dB(A) mute is like a spring breeze carrying tender leaves to the ground. With quiet braking, you will sleep like a baby all through the night.

### 7 fan speeds



### Deep sleep mode



The two-way sleep curve mode allows you to adjust the comfort temperature according to your preference. When you select the sleep mode, the light source on the panel turns off after 15s. The sleep mode is better, and the current temperature is maintained after exiting sleep mode, which makes deep sleep more comfortable.

Customize exclusive home temperature to enjoy a more comfortable life



Constant temperature precision control



7 fan speeds

Clivet's full DC inverter duct type air conditioner has 7 fan speeds. Smart management adjusts airflow to a level that is pleasant for the current occasion, ranging from top-speed cooling or heating to quiet and energy-saving sleep. This unit will work constantly to ensure that your family stays comfortable.

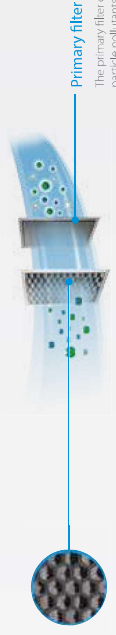


## Precise constant temperature control provides a consistent experience of comfort

Dramatic changes in temperature could cause colds, especially for sensitive people such as children and the elderly. Clivet's all-DC inverter duct type air conditioner uses technology to maintain the texture of home life. The outdoor unit utilizes a DC motor to achieve stepless speed regulation. It is precisely adjusted according to indoor temperature to say goodbye to the "emotionalization" of temperature differences, so that the elderly and children can enjoy inevitable comfort.

## Multi-layer filtration brings a healthy breeze

The indoor unit can be equipped with a primary filter and an activated carbon filter screen to effectively filter the air, and remove formaldehyde and odor from the air, keeping it healthy and fresh.



Primary filter

The primary filter can filter the hair, scurf, dust and other large particle pollutants in the air.

Activated carbon filter screen

The activated carbon filter screen can effectively remove methanol and undesirable odors from the air.

## Independent controller, featuring multiple functions and a fashionable design



Wired controller

Optional

- Two-way carrier communication is provided. You can set operations such as the indoor unit's static pressure, temperature compensation, and can query system operation status and fault feedback display.
- The size is the same as that of a standard switch, only **86 mm**, and it has an attractive style.
- The function key allows you to enter the level 2 menu, and the options are rich (sleep, light, adjustable air supply, angle, 2-in-1 control, etc.).



Remote controller

- Adjustable at a precision of 0.5°C for more precise temperature control
- The 7-fan speed is adjustable.
- Curve design with a smooth appearance and that is comfortable to hold, elegant, and beautiful.

## 05 Specifications

Indoor Unit Model	IDR3-X 26M	IDR3-X 35M	IDR3-X 53M	IDR3-X 71M
Outdoor Unit Model	MCR3-X 26M	MCR3-X 35M	MCR3-X 53M	MCR3-X 71M
Power Supply	220-240V~50/60Hz	220-240V~50/60Hz	220-240V~50/60Hz	220-240V~50/60Hz
Cooling Capacity	2600(700~3500)	3500(700~4000)	5300(1000~6000)	7200(2400~8200)
Heating Capacity	3600(700~3800)	4150(800~4600)	6200(1200~6800)	8600(2100~9600)
Cooling Power	715(170~1420)	1020(190~1460)	1500(250~2370)	2180(450~3280)
Heating Power	920(170~1360)	1200(190~1570)	1850(300~2460)	2400(400~3650)
Circulating Air Flow	480	550	750	1000
External static pressure	25 (0~40)	25 (0~40)	25 (0~60)	25 (0~60)
Weight (kg)	Indoor Unit 16	16	19.5	23.5
	Outdoor Unit 27	27	35	53
Noise	Indoor Unit 34/33/19	35/34/21	36/35/24	39/37/29
	Outdoor Unit 50	50	54	55
Indoor Unit Dimensions (W x H x D)	700 x 210 x 450	700 x 210 x 450	920 x 210 x 450	1140 x 210 x 450
Outdoor Unit Dimensions (W x H x D)	722(772) x 555 x 260	722(772) x 555 x 260	795(845) x 555 x 287	910(965) x 712 x 345
Gas Pipe	φ9.5	φ9.5	φ12.7	φ15.9
Liquid Pipe	φ6.4	φ6.4	φ6.4	φ6.4
Piping Length	m	15	25	25
Ambient temperature	°C	10~55	10~55	10~55
Temperature	Cooling	10~55	10~55	10~55
	Heating	-15~24	-15~24	-15~24
Controller	WDC-86E/KD			

Indoor Unit Model	IDR3-X 90M	IDR3-X 105M	IDR3-X 140M	IDR3-X 160M
Outdoor Unit Model	MCR3-X 90M	MCR3-X 105M	MCR3-X 140M	MCR3-X 160M
Power Supply	220-240V~50/60Hz	220-240V~50/60Hz	220-240V~50/60Hz	220-240V~50/60Hz
Cooling Capacity	9000(2700~9600)	10500(3000~11200)	13800(4200~13800)	15500(4430~15500)
Heating Capacity	10000(2800~10500)	11600(3100~12800)	16900(4500~16000)	17200(4720~17200)
Cooling Power	2620(670~3400)	3300 (820~4120)	5900(1200~6000)	6300(1340~6500)
Heating Power	3000(650~3790)	3200 (800~4220)	4800(1000~5100)	5600(1120~5700)
Circulating Air Flow	1500	1500	1800	2000
External static pressure	37 (0~100)	37 (0~100)	50 (0~100)	50 (0~100)
Weight (kg)	Indoor Unit 37	39	45	70
	Outdoor Unit 47	68	78.5	94
Noise	Indoor Unit 43/39/36	43/39/36	43/39/36	43/39/36
	Outdoor Unit 55	59	59	59
Indoor Unit Dimensions (W x H x D)	1140 x 270 x 710	1140 x 270 x 710	1200 x 300 x 800	1200 x 300 x 800
Outdoor Unit Dimensions (W x H x D)	910 x 712 x 345	950 x 840 x 360	950 x 840 x 360	1040 x 865 x 410
Gas Pipe	φ15.9	φ15.9	φ15.9	φ15.9
Liquid Pipe	φ9.5	φ9.5	φ9.5	φ9.5
Piping Length	m	30	50	50
Ambient temperature	°C	10~55	10~55	10~55
Temperature	Cooling	10~55	10~55	10~55
	Heating	-15~24	-15~24	-15~24
Controller	WDC-86E/KD			

Note:

- The minimum static pressure of the air conditioner is 80Pa.
- The capacity parameters in the table are the test data under the 25% nominal static pressure and the 7m fan speed.
- The noise parameters in the table are the test data under the 25% nominal static pressure and the 7m fan speed.
- The above parameters may change due to product improvement. Please refer to the nameplate parameters of the product.